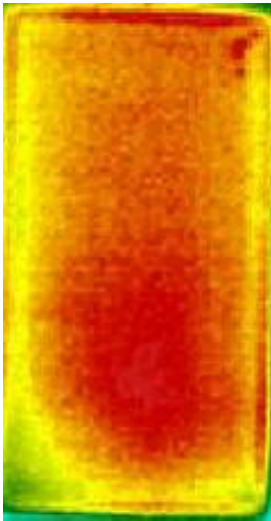


NEW PRODUCT ANNOUNCEMENT

GreenBuilt® Doors

From Matthews Millwork

Home of R5 ThermaBuilt® and 100% PVC PermaBuilt® and R10 GREENBUILT® Products



Hollow Core
Surface temp - 82°



GreenBuilt R-10
Surface temp - 73°

- Thermal Heat Test Results
 - Heat inside test chamber = 99.1 F
 - Ambient Temperature Outside test chamber = 72.4 F
 - Exposure Time = 30 minutes

Available in Flush Birch or Hardboard



- Exceeds the 2015 International Energy Code standard for doors in the building envelope
- **GreenBuilt** Flush doors = U-.01 (R-10)
- These doors are 1.75 inches thick providing R-10 thermal value
- Available in any width from 1-0 to 3-0
- Any height up to 8 feet

Available with all standard ThermaBuilt options (sills, bores, hinges, etc). Please call for pricing.

1-888-831-2166

704-821-4499

Sales@matthewsmillwork.com